

Drain Filter

EMISSION CONTROL (AUX. EMISSION CONTROL DEVICES)

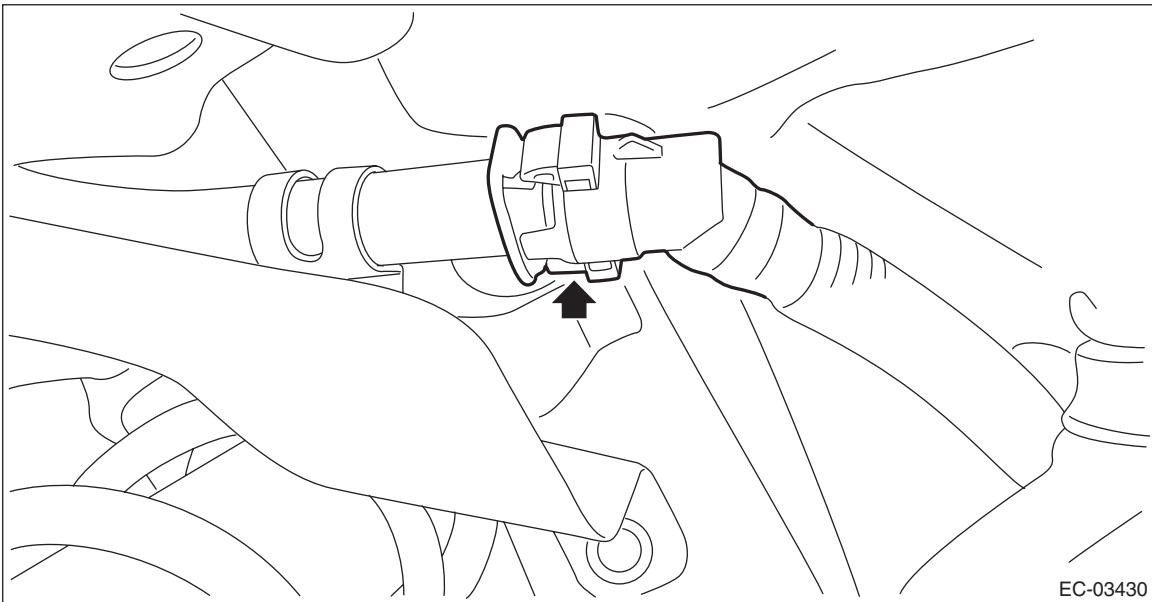
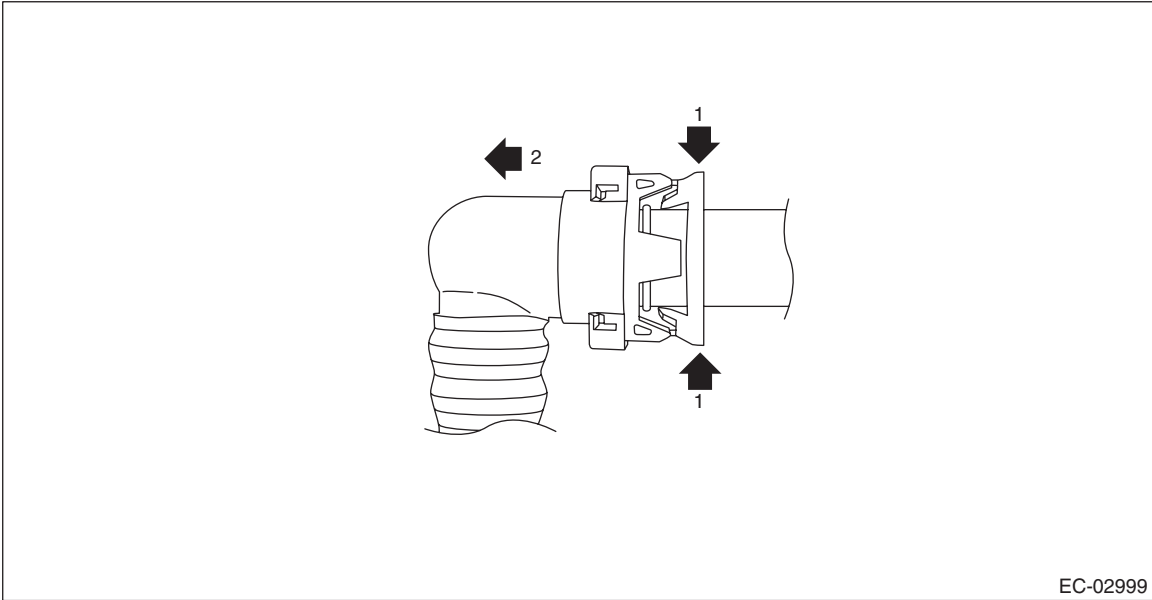
8. Drain Filter

A: REMOVAL

- 1) Remove the rear wheel LH. <Ref. to WT-5, REMOVAL, Tire and Wheel.>
- 2) Lift up the vehicle.
- 3) Remove the rear mud guard LH. <Ref. to EI-23, REMOVAL, Mud Guard.>
- 4) Disconnect the drain tube from the drain pipe.

NOTE:

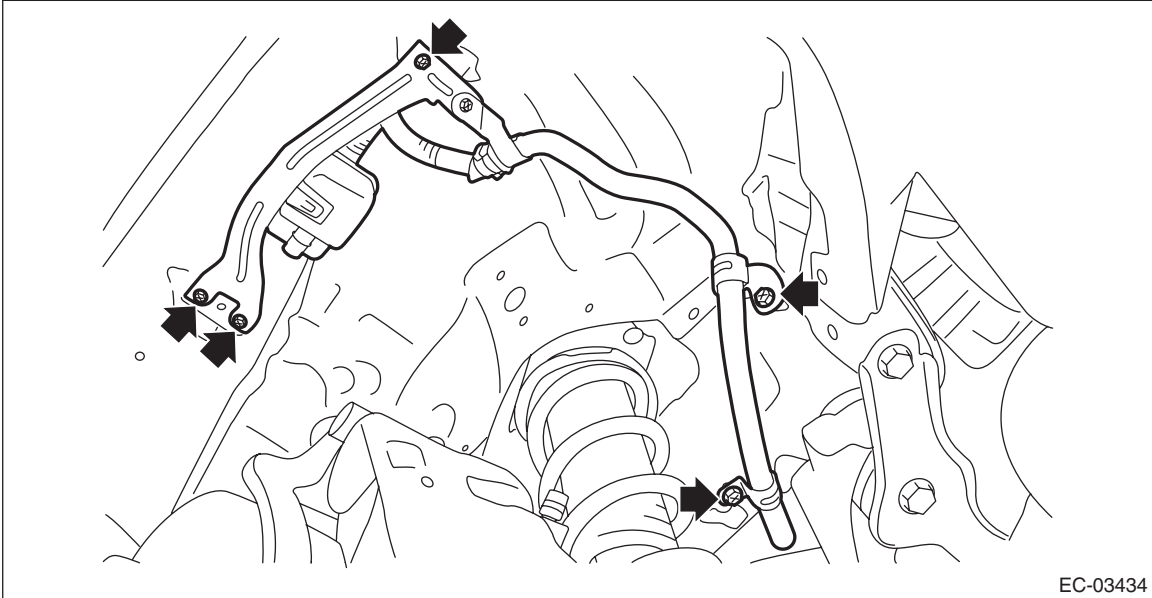
Disconnect the quick connector as shown in the figure.



Drain Filter

EMISSION CONTROL (AUX. EMISSION CONTROL DEVICES)

5) Remove the drain bracket and drain pipe from vehicle as a unit.

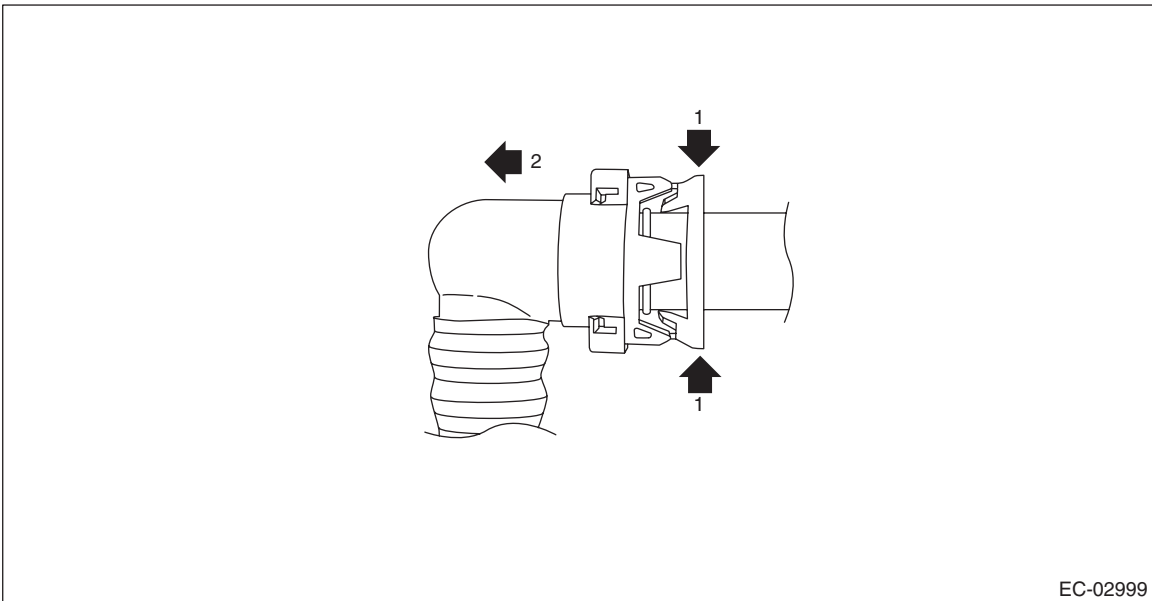


6) Remove the bolt (A) which holds drain pipe from the drain bracket.

7) Disconnect the drain tube (B) from the drain pipe.

NOTE:

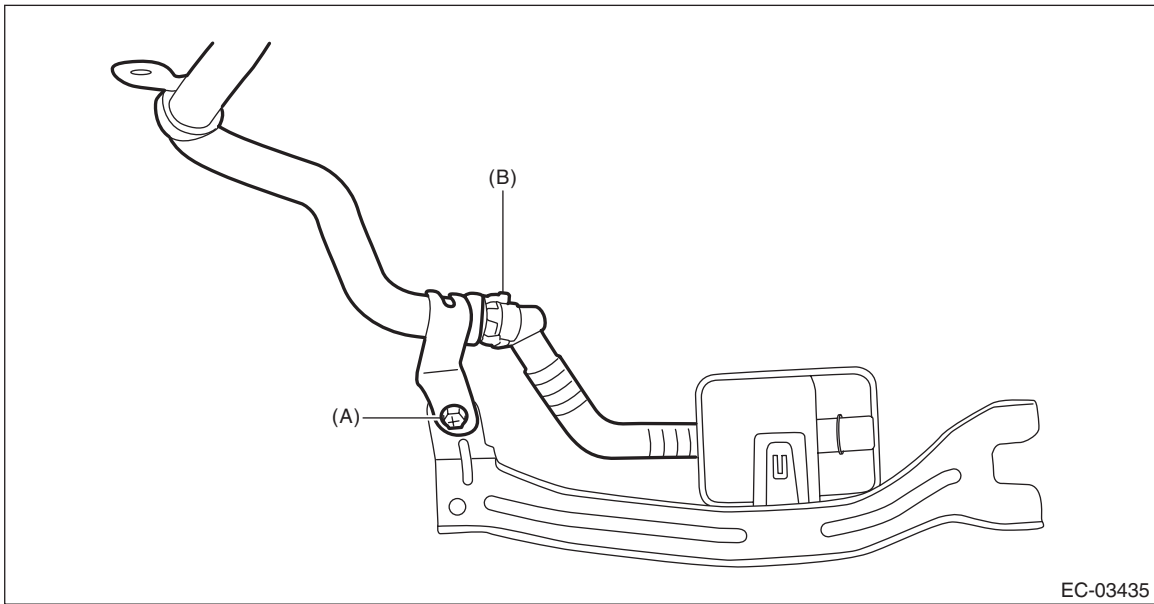
- Disconnect the quick connector as shown in the figure.



Drain Filter

EMISSION CONTROL (AUX. EMISSION CONTROL DEVICES)

- The drain filter cannot be separated from the drain bracket. Therefore, be sure to replace both of them with new ones when replacing the drain bracket or drain filter.



B: INSTALLATION

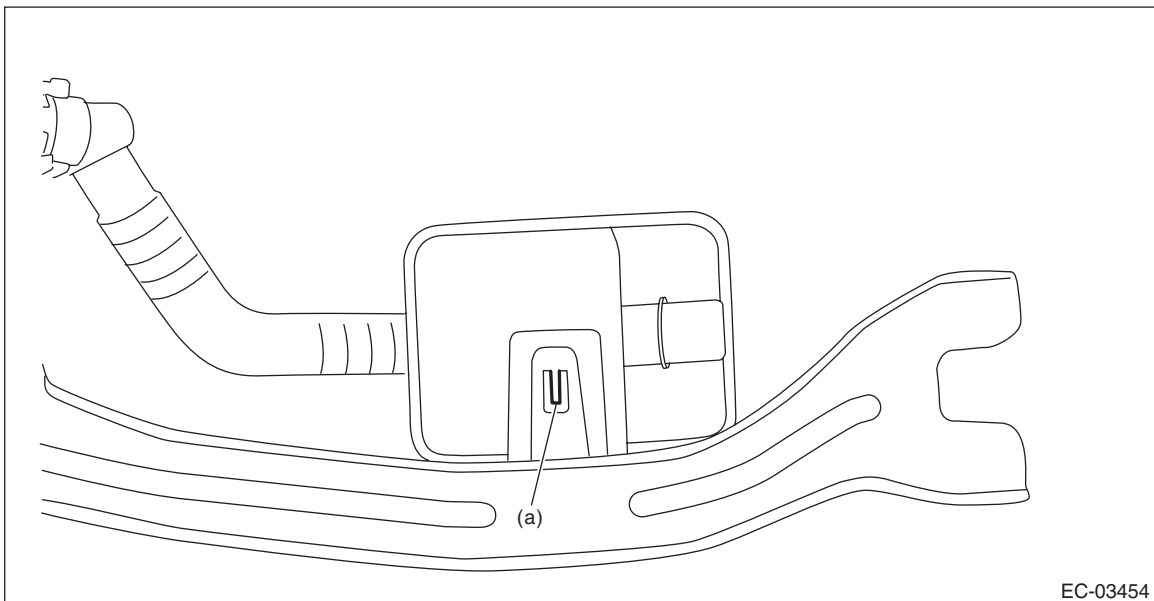
Install in the reverse order of removal.

CAUTION:

- Check that there is no damage or dust on the quick connector. If necessary, clean the seal surface of the pipe.
- Make sure that the quick connector is securely connected.

NOTE:

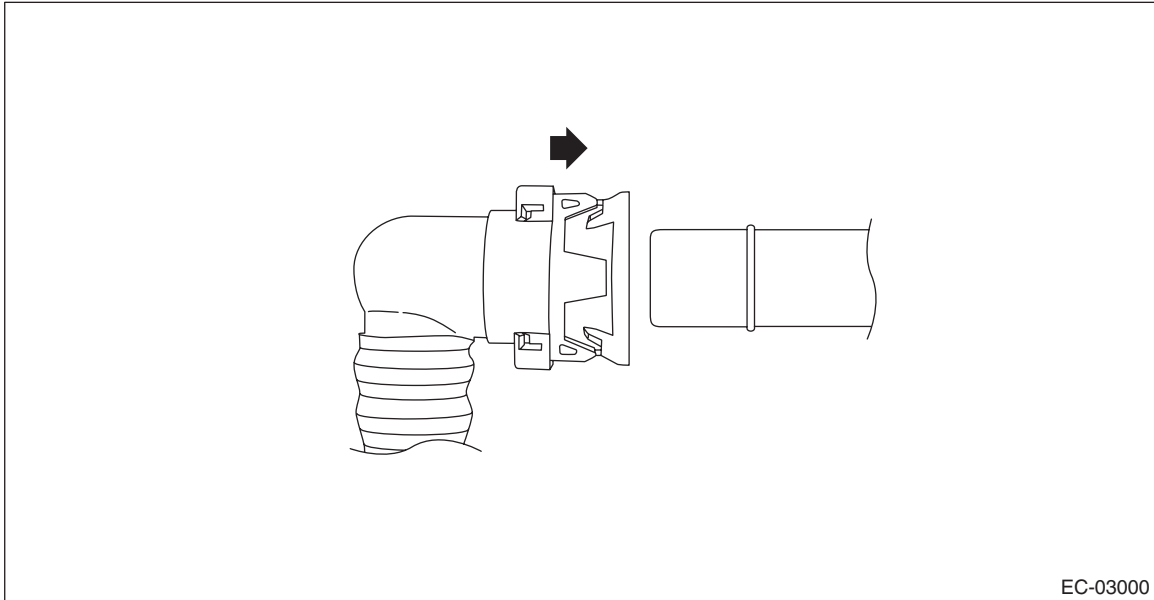
- Use a new drain bracket and a drain filter.
- Before installing the drain filter to the drain bracket, check that the claw (a) is securely tightened.



Drain Filter

EMISSION CONTROL (AUX. EMISSION CONTROL DEVICES)

- Install the quick connector as shown in the figure.



Tightening torque:
7.5 N·m (0.8 kgf-m, 5.5 ft-lb)

C: INSPECTION

- 1) Check that the drain filter has no deformation, cracks or other damages.
- 2) Check that the tube has no cracks, damage or loose part.